

Laredo

2006



A UNITY OF BEAUTY AND FUNCTION
The 2006 Laredo Travel Trailers and Fifth Wheels





One of a Kind

You are looking for a special recreational vehicle. You want the performance and durability of a luxury towable. You want the interior beauty and conveniences found in the upscale brands.

Yet you do not want to be burdened with the weight and size of a larger RV. You want to be able to tow with ease, settle quickly into the scenic haven of your choice, and proceed to live, relax, and entertain in a home-like setting that doesn't leave you dreading a rainy day.

You want an RV based on performance and dedicated to comfort and luxury, with the many extra touches that make you feel pampered. For you, Keystone RV Company has created the Laredo — One of a Kind.

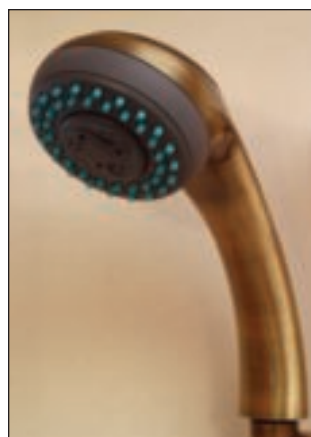
At left, the 2006 Laredo 29RL Fifth Wheel in Evergreen. You won't know you're inside an RV as you lounge in your armchairs before a beautiful corner fireplace...until you take in the splendid view through the two enormous picture windows. The angled kitchen counter allows you to enjoy the view and the state-of-the-art entertainment center while preparing meals or serving your guests. Laredo life is a life of comfort, convenience, and relaxation.



As seen in the above photo, the 29RL Laredo features a kitchen larger and more convenient than you'll find in many homes!

At right, Laredo's antique bronze designer faucet graces the deep double bowl sinks and pulls out for either spray or single-stream use. Pictured at far right, a louvered door appliance bin, one of Laredo's delightful special touches.





Shown above, the 2006 Laredo Fifth Wheel, in the Evergreen Color Scheme. The billowy, quilted spread with matching shams and window valances gives a luxury hotel suite feeling to the room. Unlike other RV beds, the Laredo full-queen is footed, with room for you to tuck your slippers beneath it.

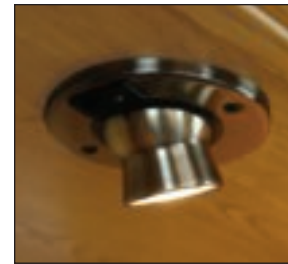


Lighter woods and carpeting give the simpler, fresher look of today's interiors. You will have no trouble blending in your own belongings, so go ahead, take along those favorite pictures and grandma's antique clock. Storage is not an issue. In the right foreground, there is a huge wardrobe with deep drawers and a TV counter.



Copper Ridge

Five-Star Comfort Suite

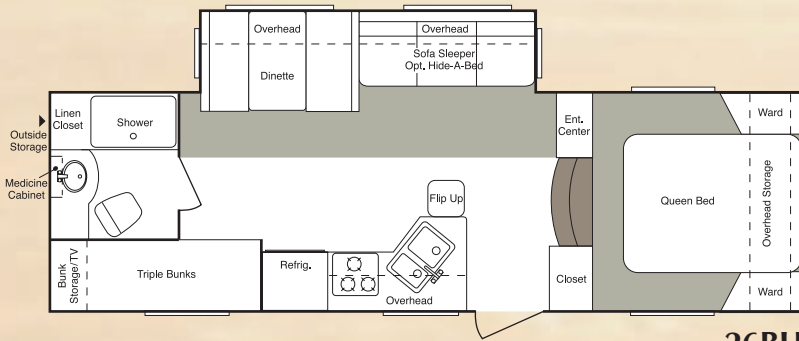


A big reason for the excitement of the 2006 Laredo is the overall fresh approach to RV interiors. Laredo's designers focused on your comfort as they threw out all the traditional ideas of how an RV should be appointed.

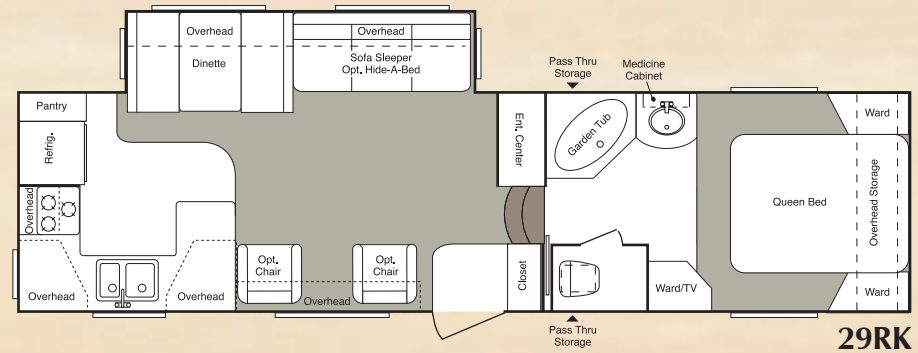
For example, behold the Laredo Fifth Wheel Five-Star Comfort Suite for 2006, all on one level. It is easily the most luxurious, spa-like, bedroom/bathroom retreat ever built in a mid-sized fifth wheel.

For many years, RV designers considered the bedroom as a small, tight place to rest your head and store your clothes after a day of travel. Laredo's concept is completely different. Our appealing Comfort Suite is planned for you to spend plenty of time there. With its bookcase headboard cleverly recessed into formerly unused space in the front end and its directional reading lamps, your Laredo queen bed becomes the ideal spot for you to enjoy your favorite book, watch TV, or even enjoy your breakfast.

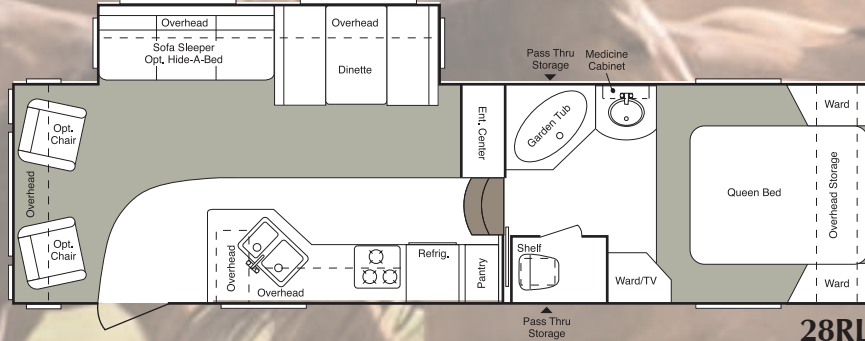
After that, you'll enter the extra large neo-angle tub/shower and enjoy any of several spray options. There's a skylight for brightness and head-room. Now, who knows? You might linger for a little more rest, or you can use the full-length mirrors to check your grooming for a day in town. The Five-Star Comfort Suite is an important part of the Laredo life style. Enjoy!



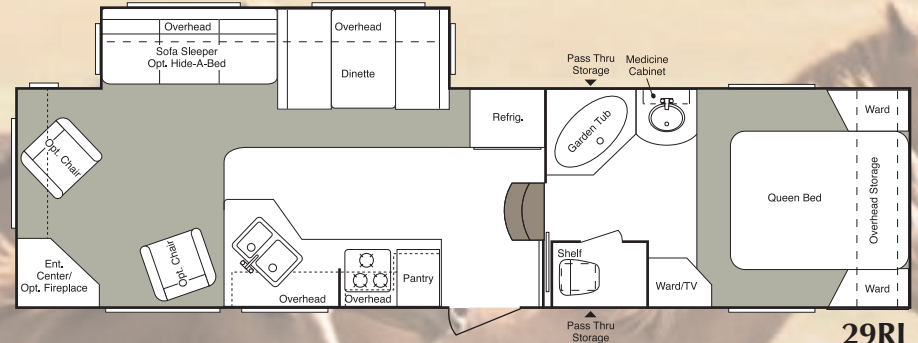
DRY WEIGHT: 6990 CARRYING CAPACITY: 3000 HITCH WEIGHT: 1585 EXTERIOR LENGTH: 28' 3"



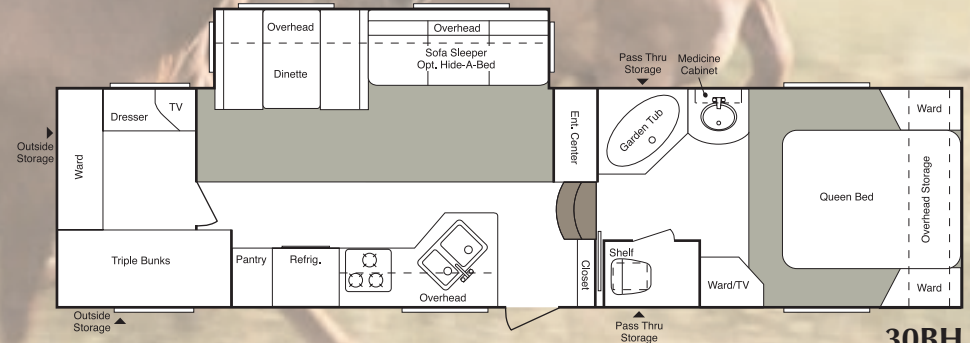
DRY WEIGHT: 7840 CARRYING CAPACITY: 3060 HITCH WEIGHT: 1430 EXTERIOR LENGTH: 31' 10"



DRY WEIGHT: 7585 CARRYING CAPACITY: 2915 HITCH WEIGHT: 1480 EXTERIOR LENGTH: 31' 1"



DRY WEIGHT: 7770 CARRYING CAPACITY: 3130 HITCH WEIGHT: 1565 EXTERIOR LENGTH: 31' 10"

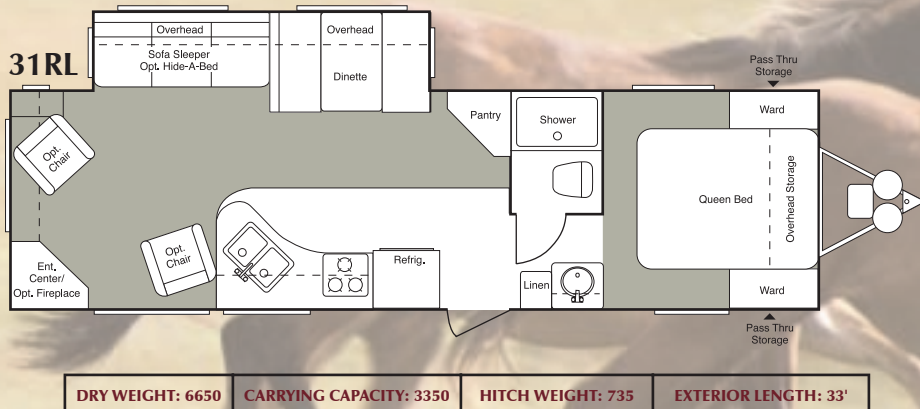
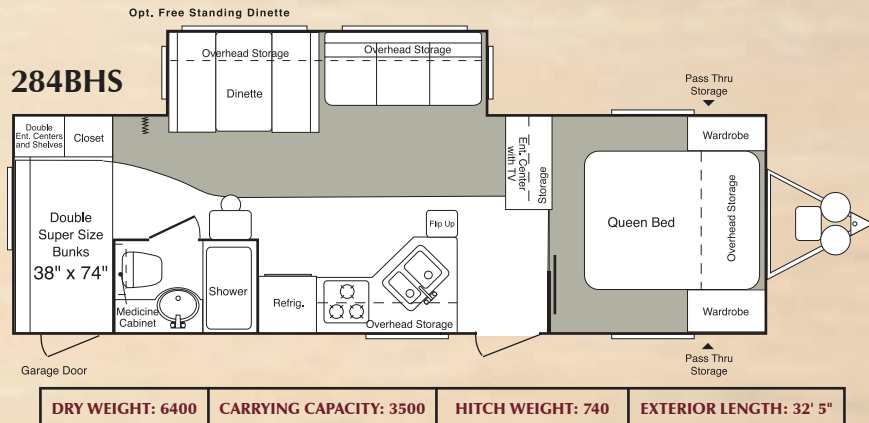


DRY WEIGHT: 8245 CARRYING CAPACITY: 3155 HITCH WEIGHT: 1605 EXTERIOR LENGTH: 33' 10"



The hide-a-bed sofa offers residential detail including rolled arms, loose cushions and bun-shaped feet.

MODELS (FW and TT)	26BH	28RL	29RK	29RL	30BH	284BHS	31RL
Fresh Water System (in gal)	50	50	50	50	50	50	50
Grey Water (in gal)	40	40	72	72	72	28	58
Waste Water (in gal)	40	40	40	40	40	28	28
LPG Capacity (in lbs.)	60	60	60	60	60	60	60
225-15" Tire	✓	✓	✓	✓	✓	✓	✓
Height (with A/C)	12' 1"	12' 1"	12' 1"	12' 1"	12' 3"	11'	11'



See "trailer weight information" placard located in unit for specific weight including options.
Base dry weights exclude all removable options. Carrying capacity includes all popular options, excluding fluids.



At far left, Laredo's central vacuum connects inside and out for easy clean-up. Also notice the contoured steps. Seen at left, Laredo's stylish accent lighting provides a home interior touch.

CONSTRUCTION

Walls-R-9

2" Welded, Aluminum framed sidewalls and endwalls
Laminated, gel-coated Filon
Solid block foam insulation
Fiberglass front cap

Floor-R-11

3" Welded, Aluminum floor joists on 16" centers
5/8" Seamless, one-piece floor decking
Moisture barrier underbelly
Underbelly is enclosed with one-piece fluted polypropylene
Note: Underbelly heated by furnace

Roof-R-14

4-1/2" radius truss rafters on 16" centers
3/8" roof decking — Full walk-on!
One-piece EPDM rubber roof with Insulated, A/C duct

Tires & Chassis

8"-10" powder-coated I-Beam frame
5200 lb. Ultra-Lube axles
Leaf spring "equalizing" suspension system
225-15" Trailer Tires — Designed to reduce bounce and sway
12" electric brakes
Manual override for slideouts
1-1/4" frame-mounted receiver
Full-size spare tire
Adjustable extended hitchpin

EXTERIOR

Heated, enclosed holding tanks
Fully enclosed underbelly
Huge, lighted pass-through storage compartments
Deep-tint safety-glass windows
Exterior shower
Entry assist handle
Removable picnic table (28RL, 29RK, 29RL, 30BH)
Rain gutters with downspouts
Porch light
Patio scare light
Utility light
Deluxe patio awning
Rear ladder (FW)
Electric front jacks (FW)
Stabilizer jacks

INTERIOR

Living Area

Residential carpeting and carpet pad
Stain-resistant fabrics
Day/night shades
Raised-panel oak mortise-and-tenon cabinet doors
Entertainment center with TV cabinet
Residential-steel drawer guides
Overhead cabinets in slideouts
Five lights in every slideout!
Ventilating windows on slideout end walls
Adjustable reading lights over sofa

Kitchen

Residential-size overhead cabinets
60/40 deep-bowl acrylic kitchen sink
Residential metal faucet with pull-out sprayer
Oak knife holder in countertop
Linoleum kitchen floor
Three power outlets in every kitchen!
Deep, real wood drawers
Sink cover (1)

Bathroom

Residential fiberglass tubs & showers — not ABS!
Tub surround
Shower door
Residential adjustable shower head
Porcelain Foot-pedal flush toilet
Large, residential-size bath sink
Residential-style medicine cabinet
Skylight over bath
Power roof vent

Bedroom

60" x 80" Deluxe innerspring mattress
Heavily quilted bedspread with pillow shams
High-capacity wardrobes
Functional headboard with shelf and power outlets (28RL, 29RK, 29RL, 30BH)
Adjustable reading lights
TV hook-up
6'2" of headroom at foot of bed (FW)
Residentially designed bed with shoe storage

Appliances

Large, 8-cu.ft. double-door refrigerator
Over-the-range microwave
AM/FM/CD/DVD home theater system (N/A 26BH)
13,500 BTU ducted roof A/C
High output range with auto-igniter and 22" oven

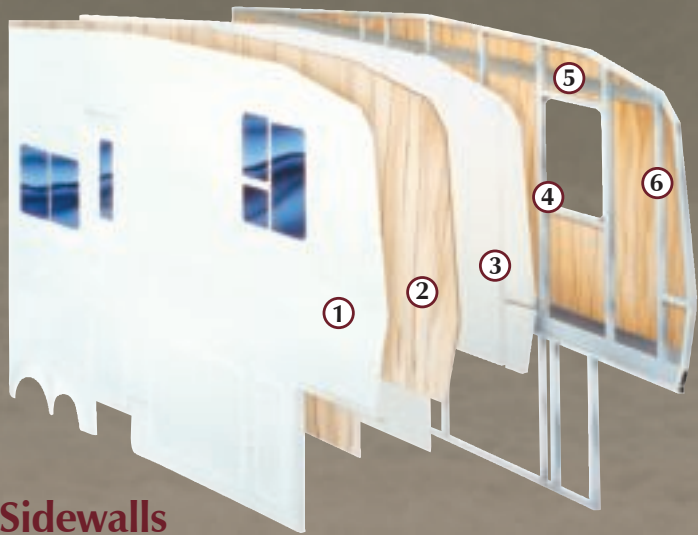
Utilities

Easy access double 30-lb. LP bottles with auto changeover
30,000 BTU E.I. high-output furnace with automatic ignition
10 Gallon E.C. gas/elec. DSI hot water heater-28RL, 29RK, 29RL, 30BH
6 Gallon gas/elec. DSI hot water heater (284BH, 31RL, 26BH)
Winter Guard winterizing kit
Water heater bypass kit
Systems monitor panel
55-amp convertor
30-amp power cord
Cable & Satellite hook-ups

Safety

LP gas leak detector
Smoke detector
Carbon monoxide detector
Fire extinguisher
Safety chains (TT)
Electric brakes with breakaway switch
Safety glass windows

Construction



Sidewalls

1. Gel-Coated Filon Fiberglass
2. 1/8" Luan Wood Backer
3. Solid Block EPS (Expanded Polystyrene) Insulation
4. Radius Window Corner Blocks
5. Metal Backing Strips (EGS Electro-Galvanized Sheet)
6. 2" Welded Aluminum Sidewall Studs

Welded 2" aluminum framing is at the heart of our 4-layer sidewall construction, engineered to make your Laredo strong and durable while creating a fifth wheel that is easier to tow. Previously found only in fifth wheels at a much higher price point, Laredo's structural integrity assures you of strength, superior insulation, and durability for many years to come.



An exterior hot/cold shower is standard on every floor plan.



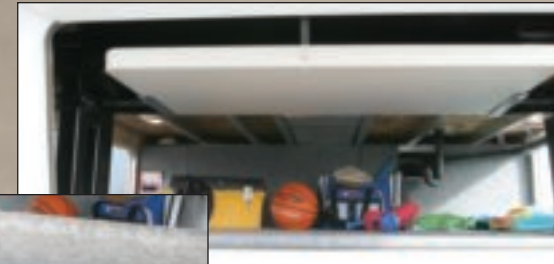
Standard 1-1/4" Frame-Mounted Receiver compatible with accessories such as the bike rack shown above.



Laredo's one-piece underbelly completely encloses its insulated and heated subfloor while also providing wind resistance while towing.



Laredo's aluminum frame combines strength and durability with lightweight, high-end construction for an incredibly carefree towing experience.



Laredo provides high-capacity, exterior-access storage on every floor plan. Shown above, a removable picnic table and underfloor toolbox storage (see inset), available in fifth wheels.



Laredo's Winterguard™ system allows you to send RV antifreeze directly into your plumbing lines with ease. Notice also the convenient receptacle for your Dirt Devil® central vacuum.



15" tires and easy-to-lube axles are standard for the entire Laredo product line.

Laredo

2006 Travel Trailers and Fifth Wheels

Laredo Travel Trailers and Fifth Wheels are products of:



Keystone RV Company

2642 Hackberry Drive, Goshen, IN 46526
574.535.2100 www.keystone-laredo.com

For more information, contact your Laredo Dealer:



Go RVing
Life's A Trip